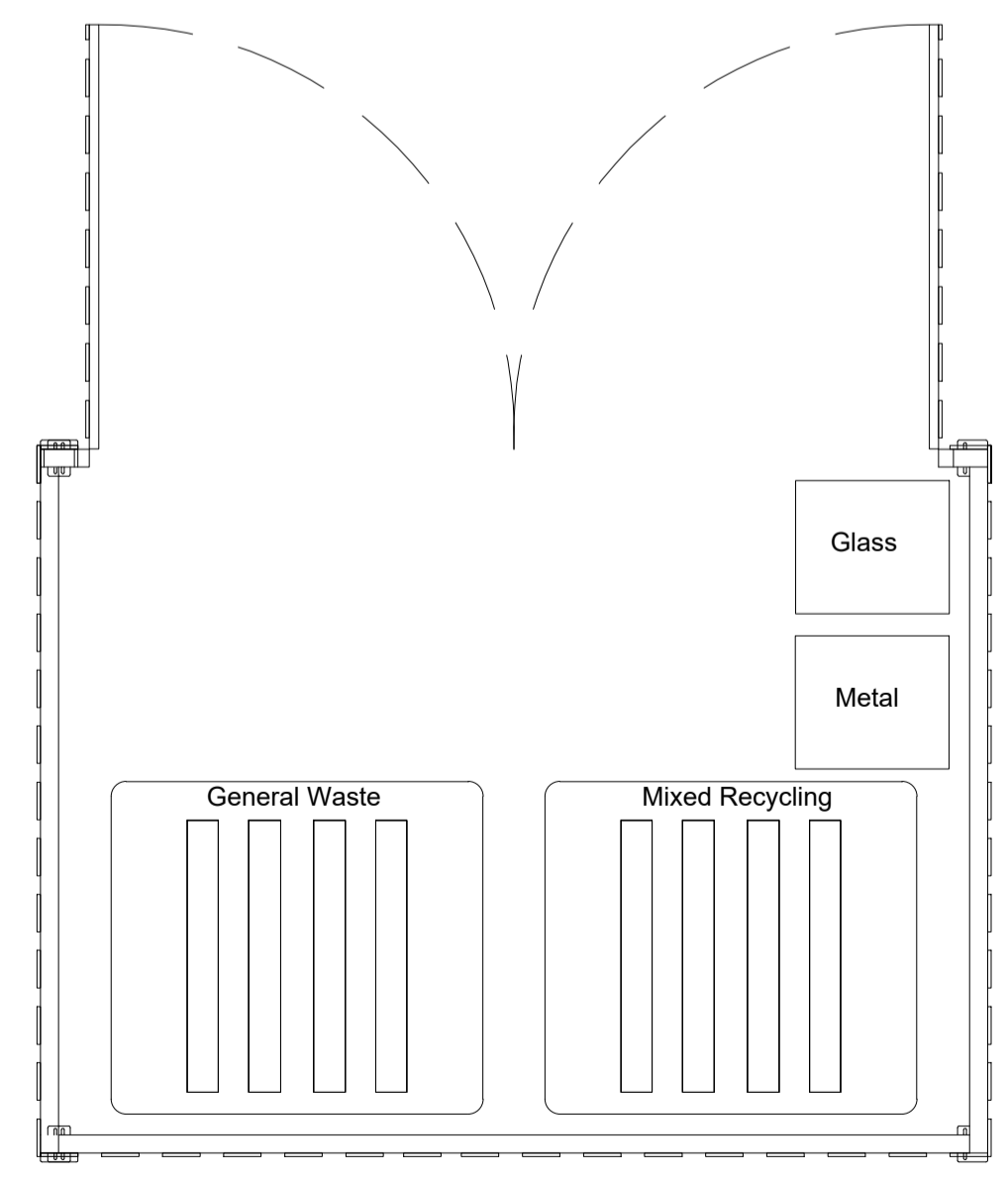
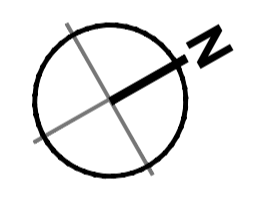




**Key Plan**  
Scale 1:1000

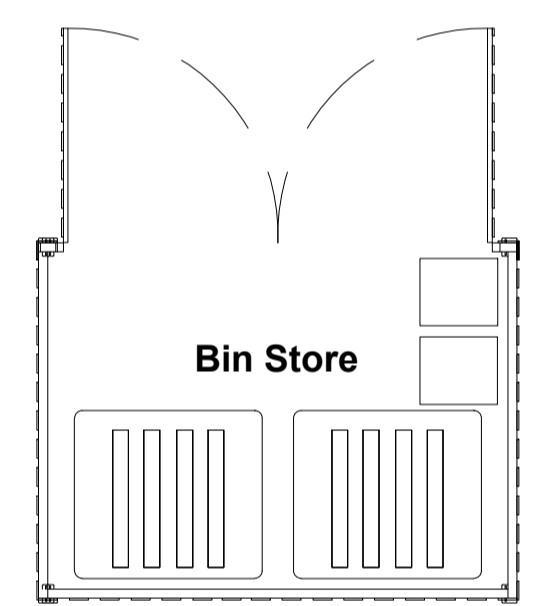


**Bin Store Plan**  
Scale 1:25

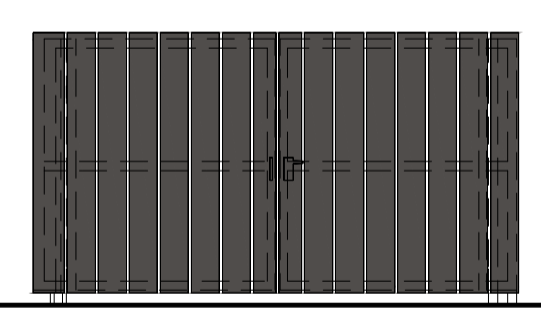
NOTE: Bin stores to be formed from trespa planks on galvanised structural frame.  
 Bin store to be bolted to new cast concrete base, laid to appropriate falls to allow free draining to gully.  
 Bin store to be dark grey/ anthracite.



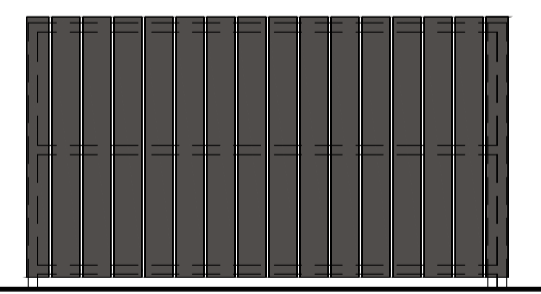
**Substation**  
 Typical glass reinforced plastic housed substation to meet energy and power distributor's specification.  
**Size:** 3.0m x 3.0m x 2.5m high, with double-door aperture of 2.7m x 2.1m high.  
**Colour:** 18 B 25 (Merlin Grey or Green) to meet standard approved colours defined by energy and power distributor in accordance with BS 4800: 2011.



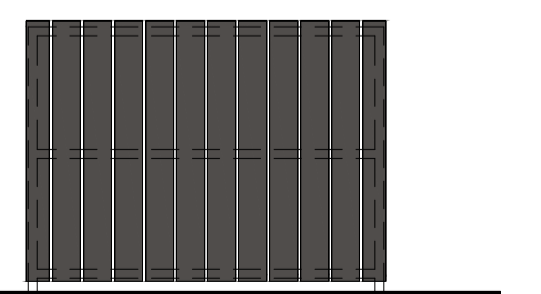
**External Bin Store - Layout**  
Scale 1:50



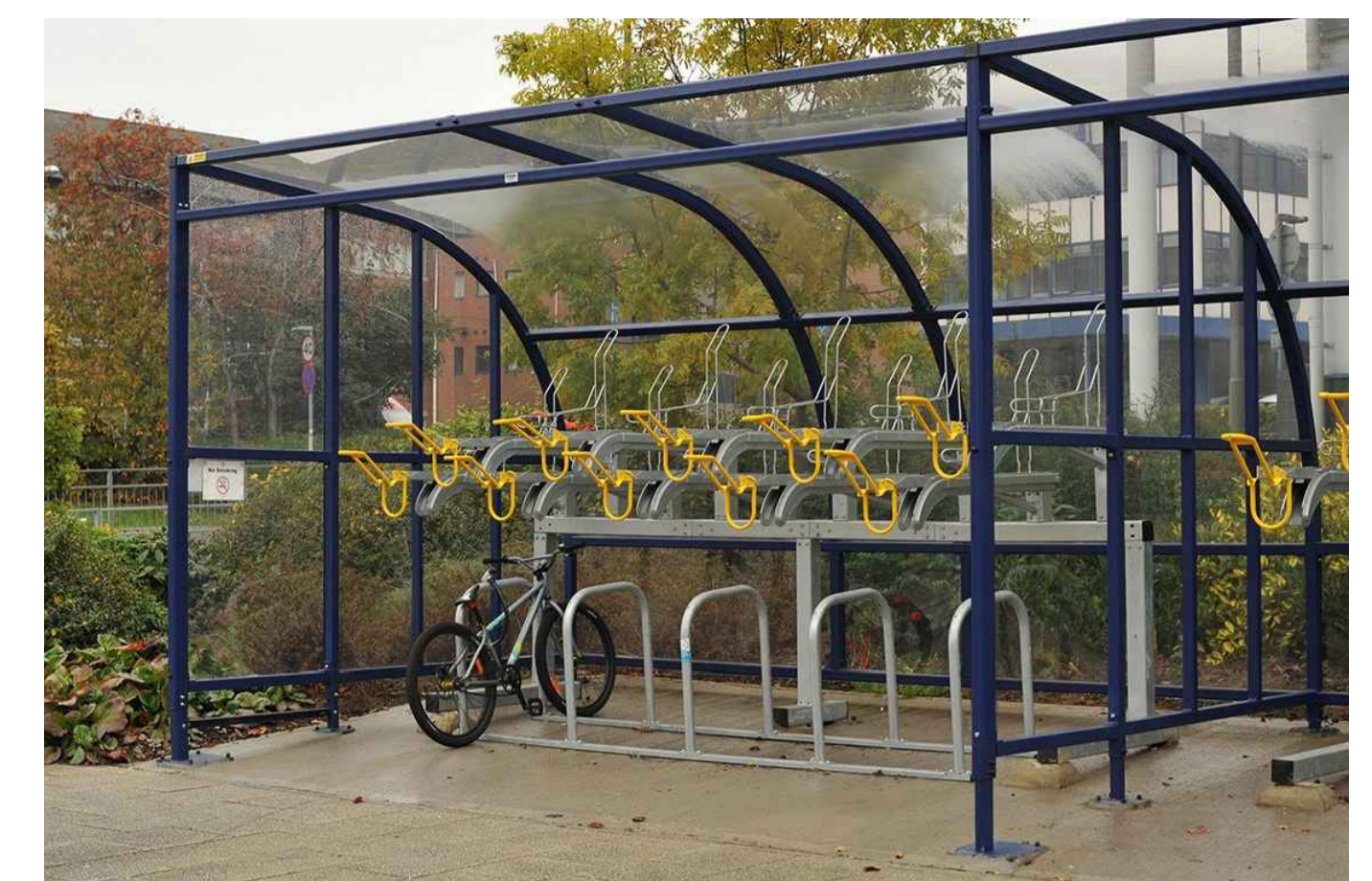
**External Bin Store - Front Elevation**  
Scale 1:50



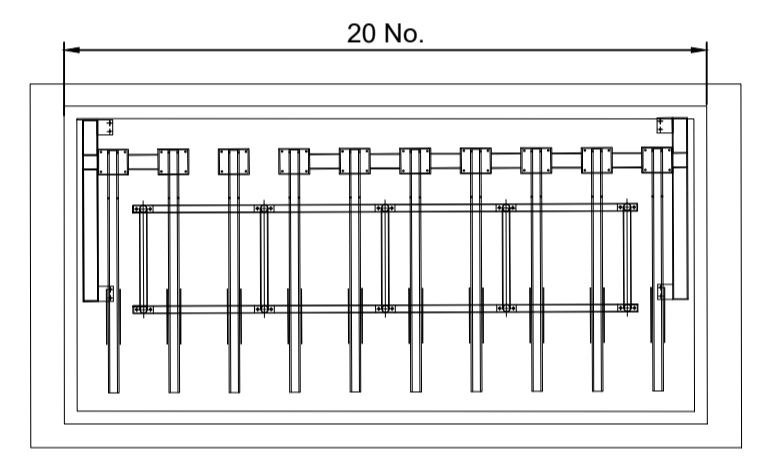
**External Bin Store - Rear Elevation**  
Scale 1:50



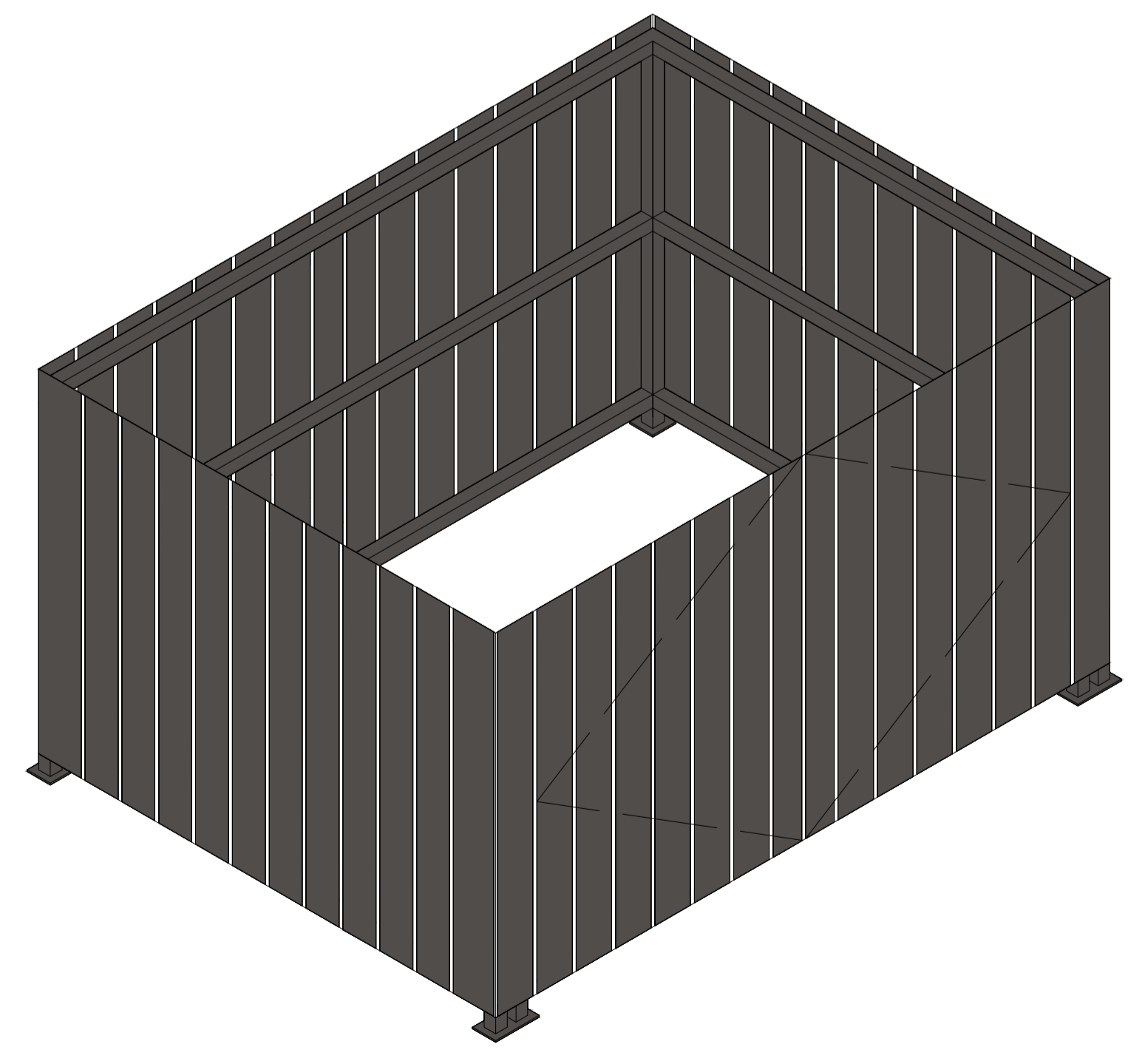
**External Bin Store - Side Elevation**  
Scale 1:50



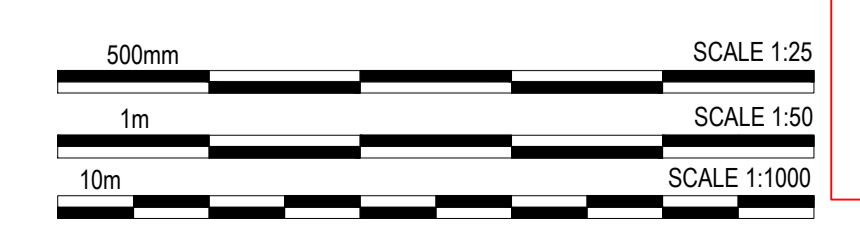
**Broxap Wardale double stack cycle shelter**  
 Cycle shelter type to be Broxap Wardale - "toast-rack" supports.  
 Finish: Polyester powder coated  
 Colour: Anthracite (RAL 7016)



**Cycle Shelter - Scale 1:50**



**Indicative Axonometric - Bin Store/ Condenser Compound**  
Scale NTS



K	Application boundary updated.	LAH	AJL	14.10.22
J	Substation and parking relocated to suit easement.	LAH	AJL	07.10.22
H	Substation colour revised inline with local authority's comments.	LAH	AJL	07.10.22
G	Mode Transport & AAC coordinated.	LAH	AJL	30.09.22
F	Unit 100 Reconfigured	LAH	AJL	15.09.22
rev	amendments	by	ckd	date

Weybridge Business Park, Weybridge

External Compound Details



RIBA PoW Stage:	2 - Concept Design
Document Suitability:	S1
Drawn / Checked:	LAH / MT
Date:	07.02.22
Scale:	1:1000 A1
UMC Project Number:	21490
Document Reference:	Drawing no: Revision:
21490 - UMC - ZZZZ - SI - DR - A	0703 K

**PLANNING**  
 THIS DRAWING IS TO BE USED FOR THE STATED PURPOSE ONLY AND SHOULD NOT BE USED FOR ANY OTHER