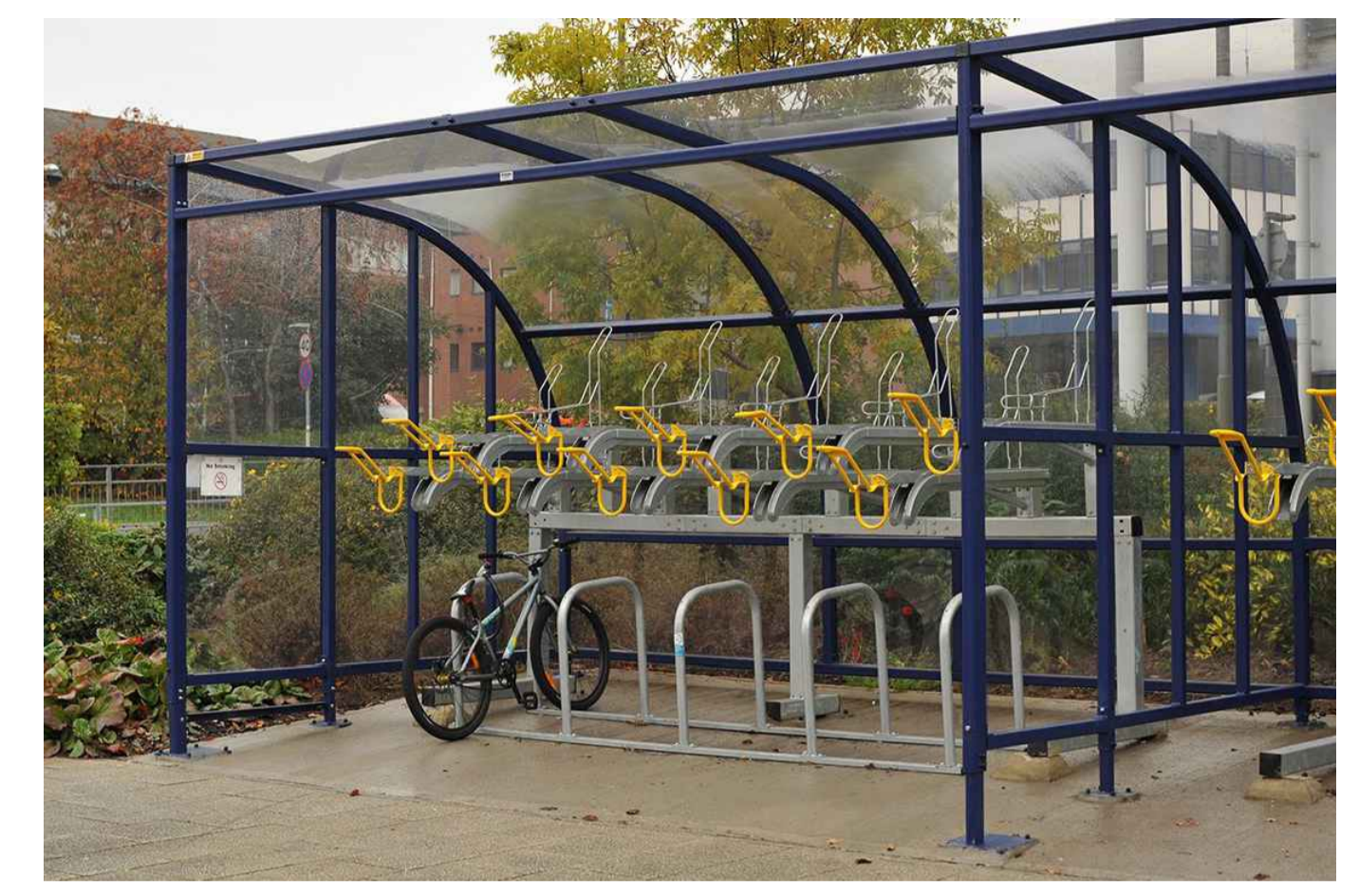




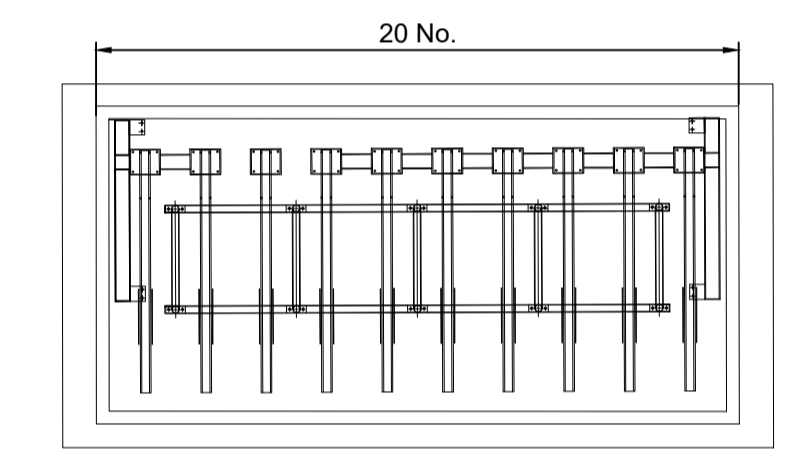
**Key Plan**  
Scale 1:1000



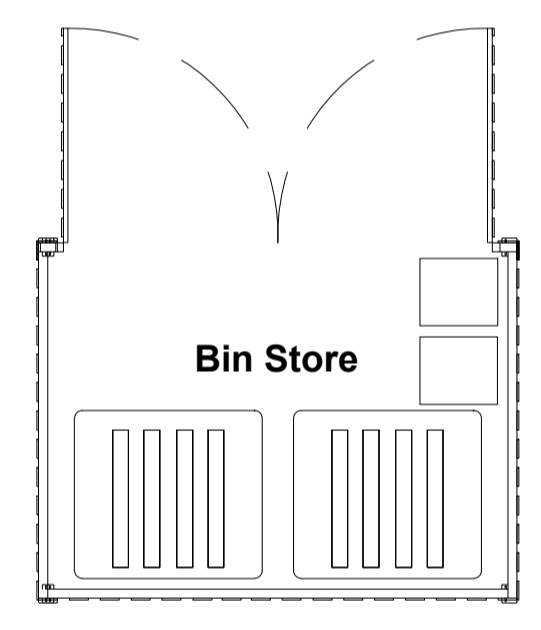
**Substation**  
 Typical glass reinforced plastic housed substation to meet energy and power distributor's specification.  
**Size:** 3.0m x 3.0m x 2.5m high, with double-door aperture of 2.7m x 2.1m high.  
**Colour:** 18 B 25 (Merlin Grey or Green) to meet standard approved colours defined by energy and power distributor in accordance with BS 4800: 2011.



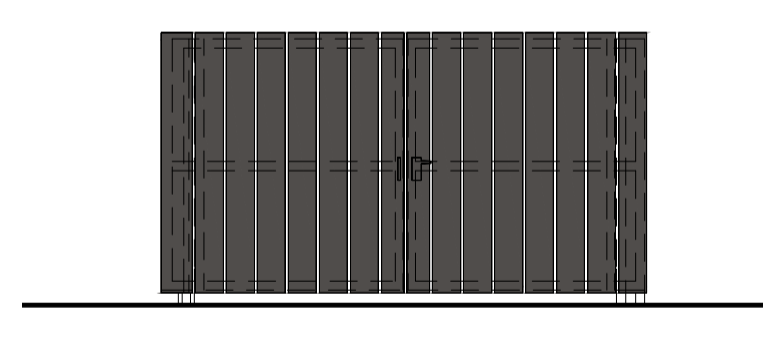
**Broxap Wardale double stack cycle shelter**  
 Cycle shelter type to be Broxap Wardale - "toast-rack" supports.  
 Finish: Polyester powder coated  
 Colour: Anthracite (RAL 7016)



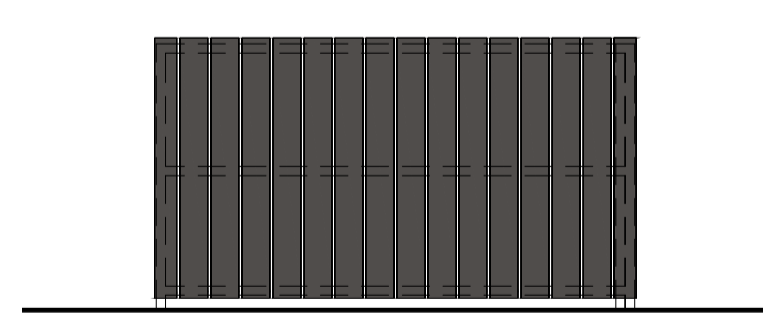
**Cycle Shelter - Scale 1:50**



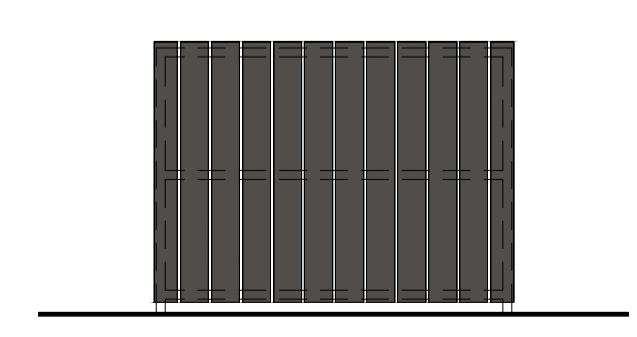
**External Bin Store - Layout**  
Scale 1:50



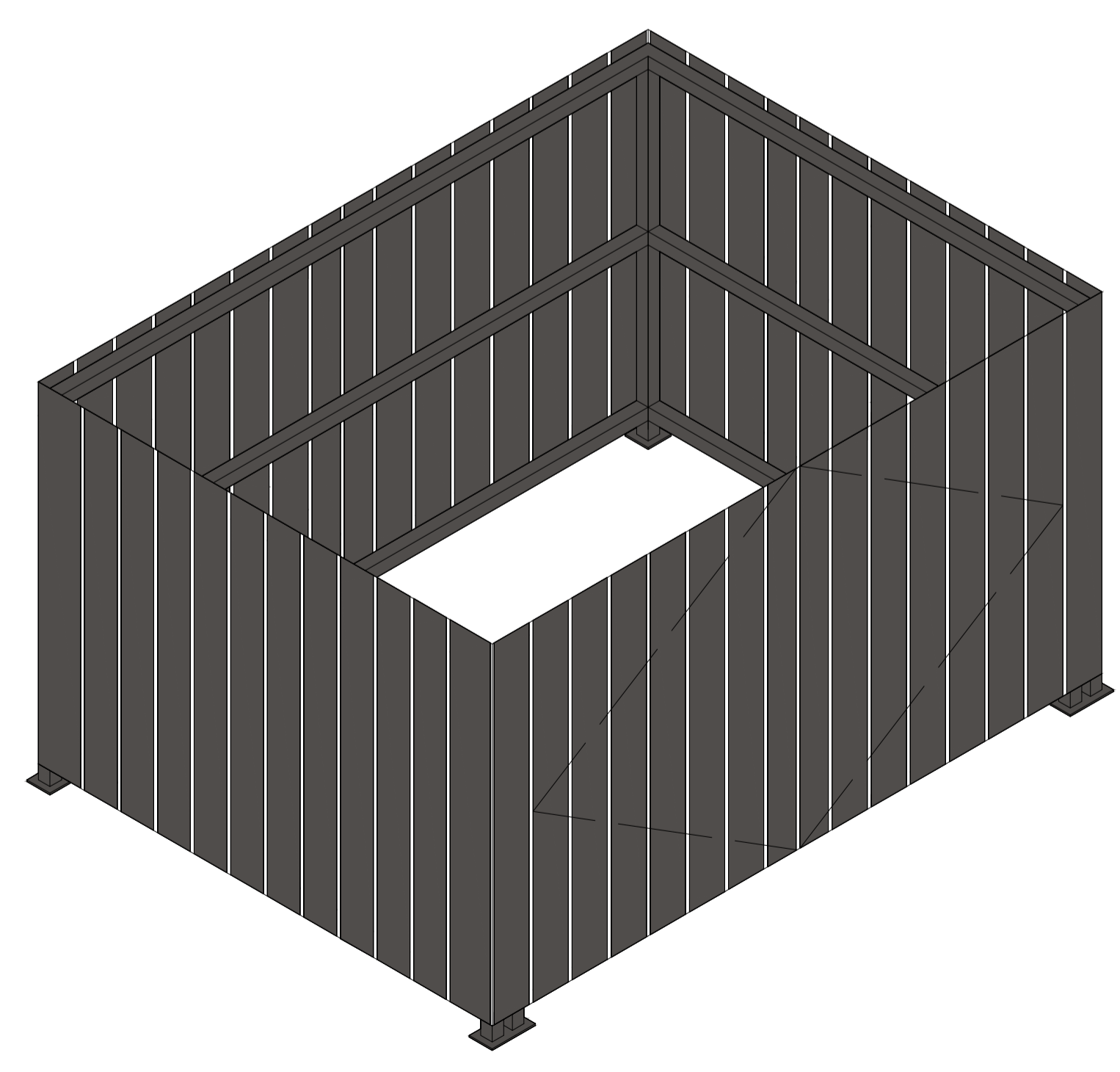
**External Bin Store - Front Elevation**  
Scale 1:50



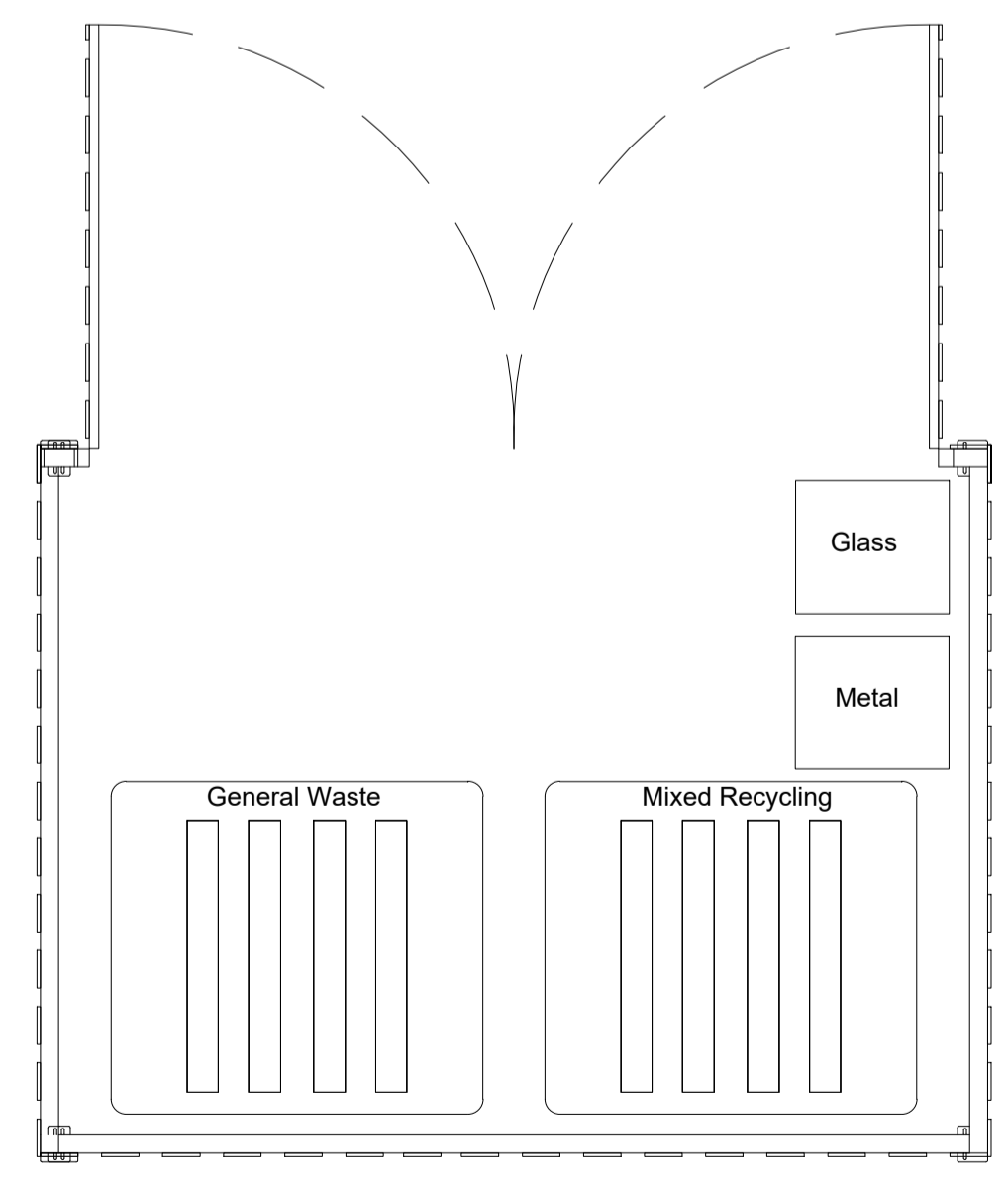
**External Bin Store - Rear Elevation**  
Scale 1:50



**External Bin Store - Side Elevation**  
Scale 1:50

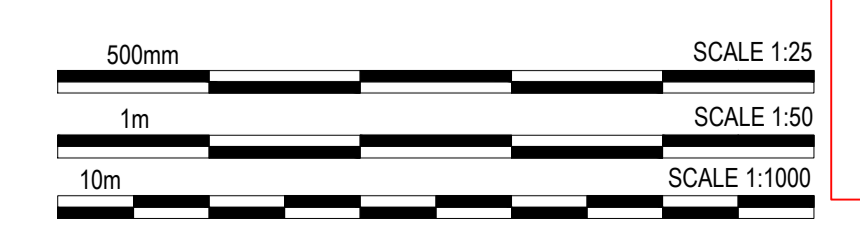


**Indicative Axonometric - Bin Store/ Condenser Compound**  
Scale NTS



**Bin Store Plan**  
Scale 1:25

NOTE: Bin stores to be formed from trespa planks on galvanised structural frame.  
 Bin store to be bolted to new cast concrete base, laid to appropriate falls to allow free draining to gully.  
 Bin store to be dark grey/ anthracite.



rev	amendments	by	ckd	date
E	Red line boundary revised in line with Savillis comments dated 06.06.22	AMQ	AJL	17.06.22

Weybridge Business Park, Weybridge

External Compound Details



RIBA PoW Stage:	2 - Concept Design
Document Suitability:	S1
Drawn / Checked:	LAH / MT
Date:	07.02.22
Scale:	1:1000 A1
UMC Project Number:	21490
Document Reference:	Drawing no: Revision:
21490 - UMC - ZZZZ - SI - DR - A	0703 E

**PLANNING**  
 THIS DRAWING IS TO BE USED FOR THE STATED PURPOSE ONLY AND SHOULD NOT BE USED FOR ANY OTHER