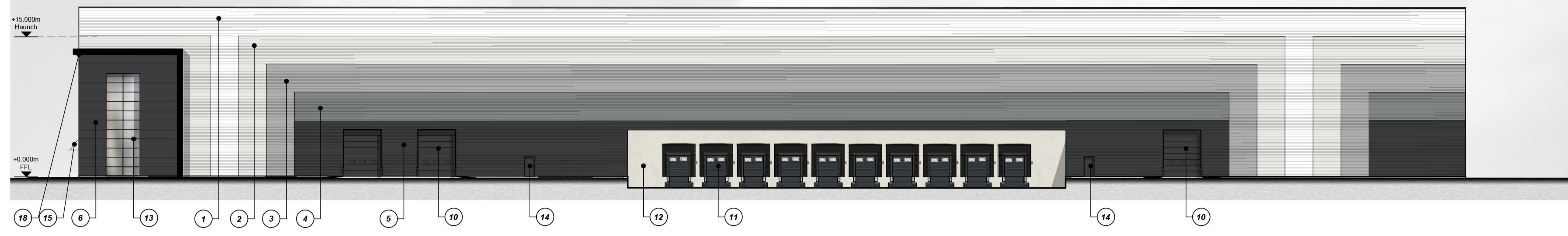


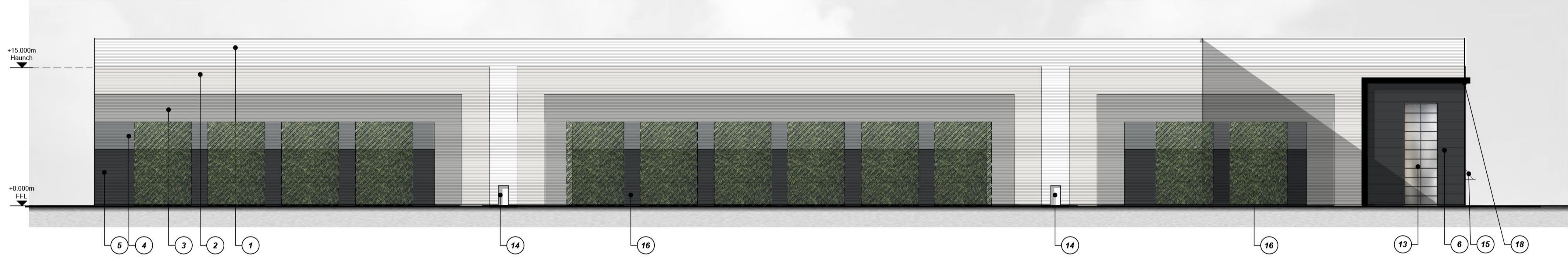
- Dimensions are in millimeters, unless stated otherwise.
 - It is the recipient's responsibility to print this document to the correct scale.
 - All relevant drawings and specifications should be read in conjunction with this drawing.

External Finishes

- ① Horizontally laid trapezoidal built up cladding system
Finish: Tata Steel Colorcoat HPS200 Ultra
Colour: White (RAL 9003)
- ② Horizontally laid trapezoidal built up cladding system
Finish: Tata Steel Colorcoat HPS200 Ultra
Colour: Hamlet (RAL 9002)
- ③ Horizontally laid trapezoidal built up cladding system
Finish: Tata Steel HPS200 Ultra
Colour: Goosewing Grey (RAL 7038)
- ④ Horizontally laid trapezoidal built up cladding system
Finish: Tata Steel Colorcoat HPS200 Ultra
Colour: Pure Grey (RAL 000 55 00)
- ⑤ Horizontally laid trapezoidal built up cladding system
Finish: Tata Steel Colorcoat HPS200 Ultra
Colour: Anthracite (RAL 7016)
- ⑥ Horizontally laid micro rib cladding panel
Finish: Tata Steel Prisma
Colour: Anthracite (RAL 7016)
- ⑦ Horizontally laid micro rib cladding panel feature wall
Finish: Tata Steel Prisma
Colour: Sargasso (RAL 5003)
- ⑧ Horizontally laid micro rib cladding panel
Finish: Tata Steel Prisma
Colour: Sirius Silver
- ⑨ Horizontally laid micro rib cladding panel
Finish: Tata Steel Prisma
Colour: Zeus Matt
- ⑩ Overhead sectional door with level access
Finish: Polyester powder coated
Colour: Anthracite (RAL 7016)
- ⑪ Teledock dock levellers with sectional overhead doors with dock door access
Colour: Anthracite (RAL 7016)
- ⑫ Precast concrete pro-wall
- ⑬ Thermally broken aluminium curtain wall/window system with spandrel panel to 4th face.
Finish: Polyester powder coated
Colour: Anthracite (RAL 7016)
- ⑭ Steel insulated security door & frame
Finish: Polyester powder coated
Colour: to match adjacent cladding colour
- ⑮ Canopy projecting 1.2m from curtain walling system supported from tie rods with toughened (glazed) sheets
Finish: Polyester powder coated
Colour: Anthracite (RAL 7016)
- ⑯ Canopy ivy green wall (shown indicatively)
- ⑰ Aluminum Glazed door
Colour: Anthracite (RAL 7016)
- ⑱ Projecting 3.0mm aluminum office feature frame / portico.
Colour: Black



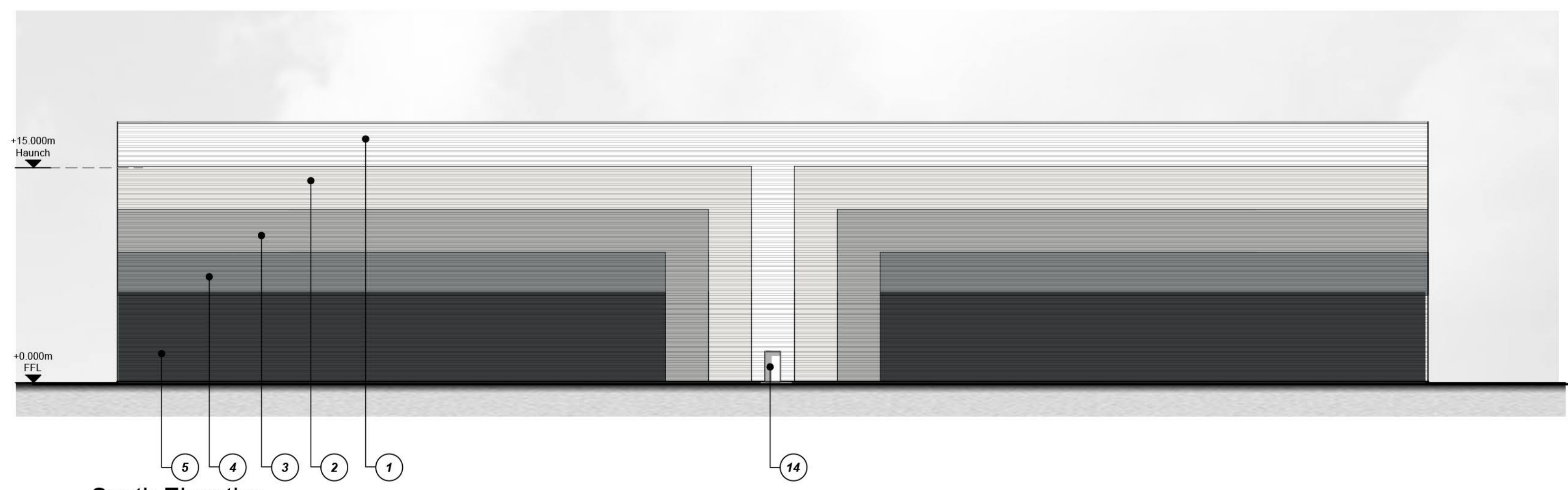
West Elevation Scale 1:200



East Elevation Scale 1:200



North Elevation Scale 1:200



South Elevation Scale 1:200



E	2 No. Dock doors omitted & elevation adjusted accordingly	AMQ	MT	29/04/22
rev	amendments	by	ckd	date

Weybridge Business Park, Weybridge
 Unit 100 Elevations



RIBA PoW Stage:	2 - Concept Design
Document Suitability:	S1
Drawn / Checked:	LAH / MT
Date:	03.02.22
Scale:	1:250 A1
UMC Project Number:	21490
Document Reference:	Drawing no: Revision:
21490 - UMC - 0100 - ZZ - DR - A	1313 E

PLANNING
 THIS DRAWING IS TO BE USED FOR THE STATED PURPOSE ONLY AND SHOULD NOT BE USED FOR ANY OTHER