

This drawing may contain Ordnance Survey material by permission of Ordnance Survey on behalf of the Controller of Her Majesty's Stationery Office © Crown Copyright 2019. All rights reserved. Reference number 0100031673.

OS Open data / © Natural England / © DEFRA / © DECC / © English Heritage. Aerial Photography - ESRI, DigitalGlobe, GeoEye, i-cubed, USDA FSA, USGS, AEX, Getmapping, Aerogrid, IGN, IGP, swisstopo, the GIS User Community

No dimensions are to be scaled from this drawing. All dimensions are to be checked on site. Area measurements for indicative purposes only.

© LDA Design Consulting Ltd. Quality Assured to BS EN ISO 9001 : 2015

Sources Ordnance Survey

P6	Site Layout Updated to Revision V	DPU	18.10.22
P5	Site Layout Updated to Revision T	DPU	11.10.22
P4	Site Layout Updated to Revision R	DPU	27.09.22
P3	Site Boundary Updated	DPU	22.06.22
P2	For Planning	DPU	28.04.22
P1	For Planning	DPU	12.04.22
REV.	DESCRIPTION	APP.	DATE

T:	01733 310 471
DRAWN	MSo
CHECKED	DPU
APPROVED	DPU

ISSUED BY	Peterborough
DATE	October 2022
SCALE@A1	1:500
STATUS	Planning

T:	01733 310 471
DRAWN	MSo
CHECKED	DPU
APPROVED	DPU

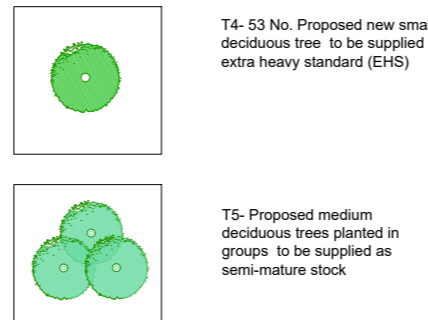
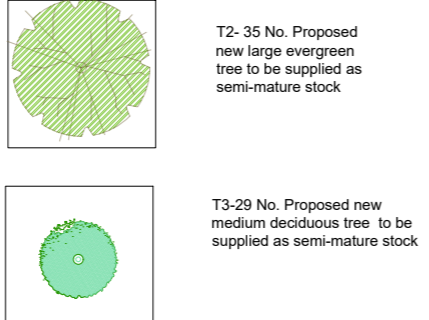
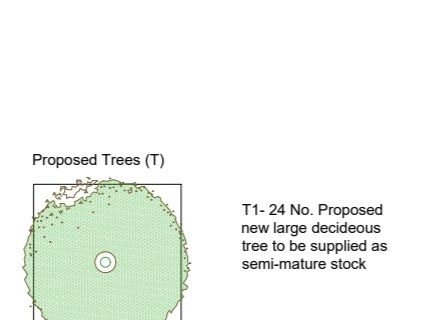
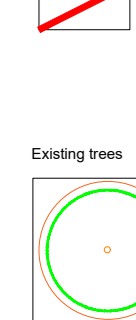
General Notes:

- Refer to UCM architects for Architectural Site Layout
- Refer to HDR for Civil and structural Engineering
- Refer to Ligne Arboriculture for Tree Survey, Tree Protection Plan and AIA

Z:\8404\_Weybridge\_LP\100DRAWINGS\8404\_100\_MS00.DWG



LEGEND



Proposed Planting (P)

	Existing Water / Marginal Planting (varies 0.4m - 1.2m) to be maintained
	P - Acoustic Fence / Screen (4m ht approx) (Mobile NoiseStop or equivalent)
	P - Riparian Ecological Planting Along River Wey and River Bourne
	P - Hedgerow Planting
	P - Matrix Planting
	P - Threshold Planting
	P - Bulbs Planting
	P - Woodland Understorey Planting
	P - Woodland Ornamental Planting
	P - Woodland Understorey Shrub Planting
	P - Species Rich Grassland
	20 No. Root Cells within car park to ensure min. 10m <sup>2</sup> soil per tree (Green Blue Urban)

Surfaces (S)

	S1 - Rigid Service Yard
	S2 - Existing asphalt footway around site boundary
	S3 - Concrete block paved footpaths
	S4 - Asphalt concrete car park access areas
	S5 - Permeable block paved car park
	S6 - Bound gravel path
	S7 - Concrete blister tactile paving
	S8 - Flexible access road

Edges (E)

	E1 - Trief safety kerb
	E2 - 125 x 150 Bullnosed p.c. dropped kerb (6mm)
	E3 - 50 x 150 p.c. square p.c. edging (50mm)

Furniture / Fencing / Gates (F)

	F4 - 125 x 255 Half battered p.c. kerb (125mm)
	F5 - 125 x 150 Bullnosed p.c. dropped kerb (6mm)
	F6 - 38 x 150 Timber Edging
	F1 - Picnic table and bench
	F2 - Bollard
	F3 - Boundary Fencing
	F4 - Vehicle access gates
	F5 - Pedestrian access gates
	F6 - Bike shelter
	F7 - Bin Storage
	Existing Contours

