

This drawing may contain Ordnance Survey material by permission of Ordnance Survey on behalf of the Controller of Her Majesty's Stationery Office © Crown Copyright 2019. All rights reserved. Reference number 0100031673.

OS Open data / © Natural England / © DEFRA / © DECC / © English Heritage. Aerial Photography - ESRI, DigitalGlobe, GeoEye, i-cubed, USDA, USGS, AEX, Getmapping, Aerogrid, IGN, IGP, swisstopo, the GIS User Community

No dimensions are to be scaled from this drawing. All dimensions are to be checked on site. Area measurements for indicative purposes only.

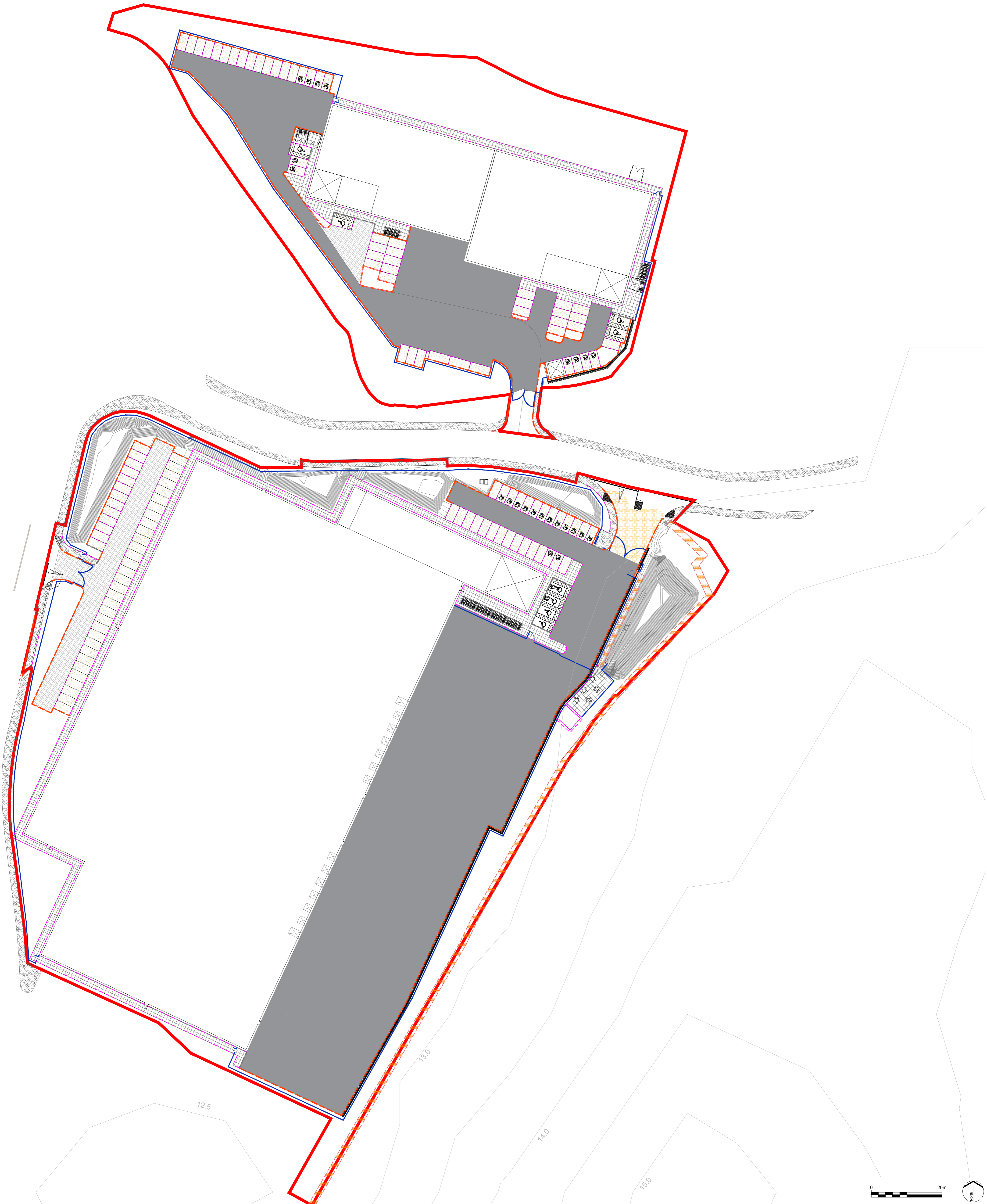
© LDA Design Consulting Ltd. Quality Assured to BS EN ISO 9001 : 2015

Sources Ordnance Survey

| | | | |
|------|-----------------------------------|------|----------|
| P5 | Site Layout Updated to Revision V | DPU | 18.10.22 |
| P4 | Site Layout Updated to Revision R | DPU | 27.09.22 |
| P3 | Site Boundary Updated | DPU | 22.06.22 |
| P2 | For Planning | DPU | 28.04.22 |
| P1 | For Planning | DPU | 12.04.22 |
| REV. | DESCRIPTION | APP. | DATE |

| | | | |
|-----------|--------------|----------|---------------|
| ISSUED BY | Peterborough | T: | 01733 310 471 |
| DATE | October 2022 | DRAWN | MSo |
| SCALE@A1 | 1:500 | CHECKED | DPu |
| STATUS | Planning | APPROVED | DPu |

Z:\M4L\WEYBRIDGE_BPT\CD\DRAWINGS\M4L_101.DWG



| | | | | |
|---|--|---|---|---|
| <p>LEGEND Surfaces (S)</p> <p>S1 - Rigid Service Yard</p> <p>S2 - Existing asphalt footway around site boundary</p> <p>S3 - Concrete block paved footpaths</p> <p>S4 - Asphalt concrete car park access areas</p> <p>S5 - Permeable block paved car park</p> <p>S6 - Bound gravel path</p> <p>S7 - Concrete blister tactile paving</p> | <p>S8 - Flexible access road</p> <p>Edges (E)</p> <p>E1 - Trief safety kerb</p> <p>E2 - 125 x 150 Bullnosed p.c. dropped kerb (6mm)</p> <p>E3 - 50 x 150 p.c. square p.c. edging (50mm)</p> | <p>E4 - 125 x 255 Half battered p.c. kerb (125mm)</p> <p>E5 - 125 x 150 Bullnosed p.c. dropped kerb (6mm)</p> <p>E6 - 38 x 150 Timber Edging</p> <p>Furniture / Fencing / Gates (F)</p> <p>F1 - Picnic table and bench</p> | <p>F2 - Bollard</p> <p>F3 - Boundary Fencing</p> <p>F4 - Vehicle access gates</p> <p>F5 - Pedestrian access gates</p> | <p>F6 - Bike shelter</p> <p>F7 - Bin Storage</p> <p>Existing Contours</p> |
|---|--|---|---|---|

