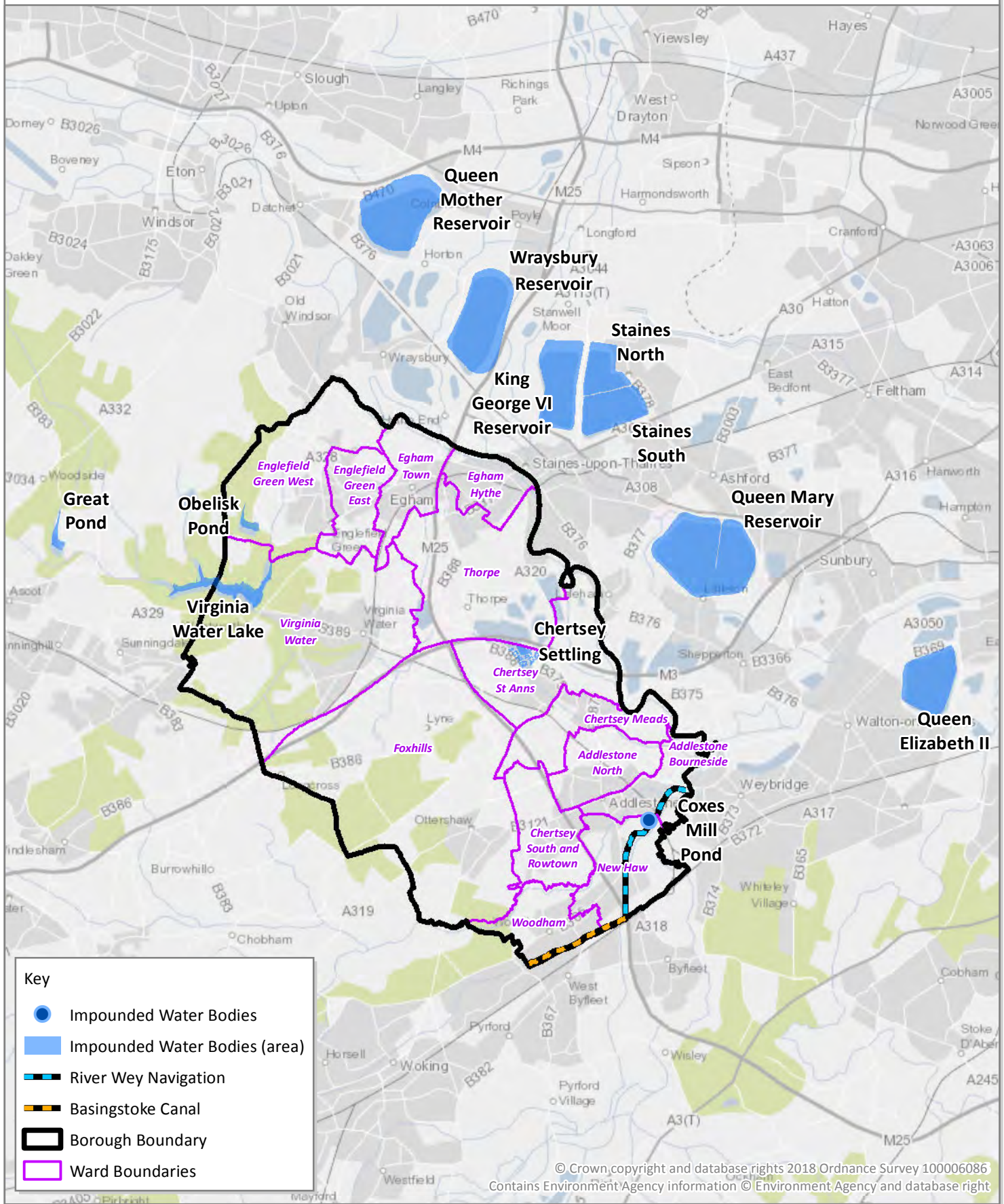


Figure 19

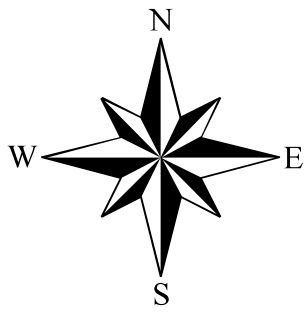
Impounded Water Bodies

Runnymede Borough Council
Runnymede Civic Centre
Station Road
Addlestone
Surrey KT15 2AH



0 1 2 4 km





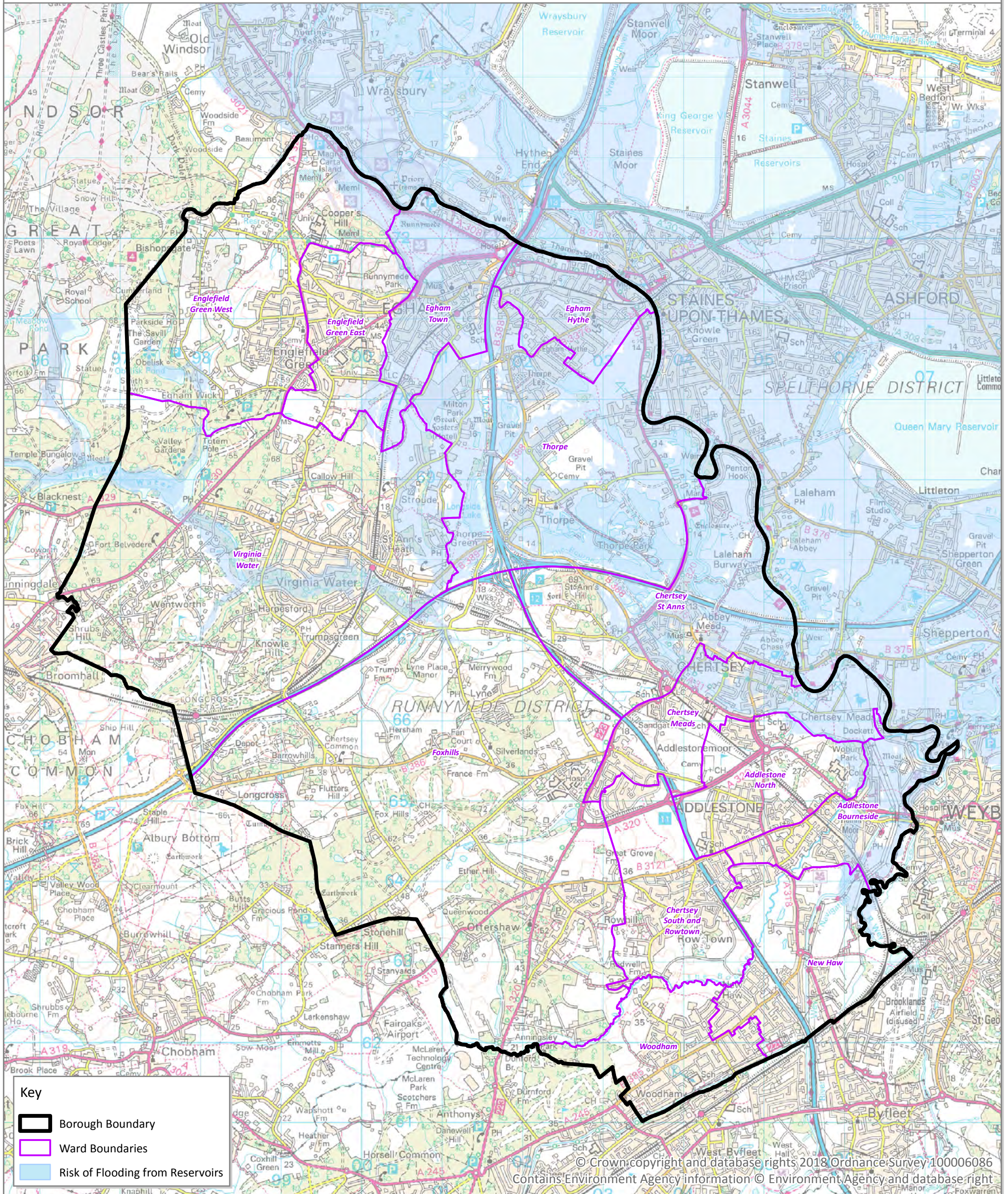
RUNNYMEDE BOROUGH COUNCIL: STRATEGIC FLOOD RISK ASSESSMENT



Figure 20a

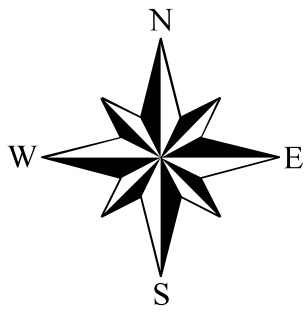
Risk of Flooding from Reservoirs

Runnymede Borough Council
Runnymede Civic Centre
Station Road
Addlestone
Surrey KT15 2AH



0 0.5 1 2 km





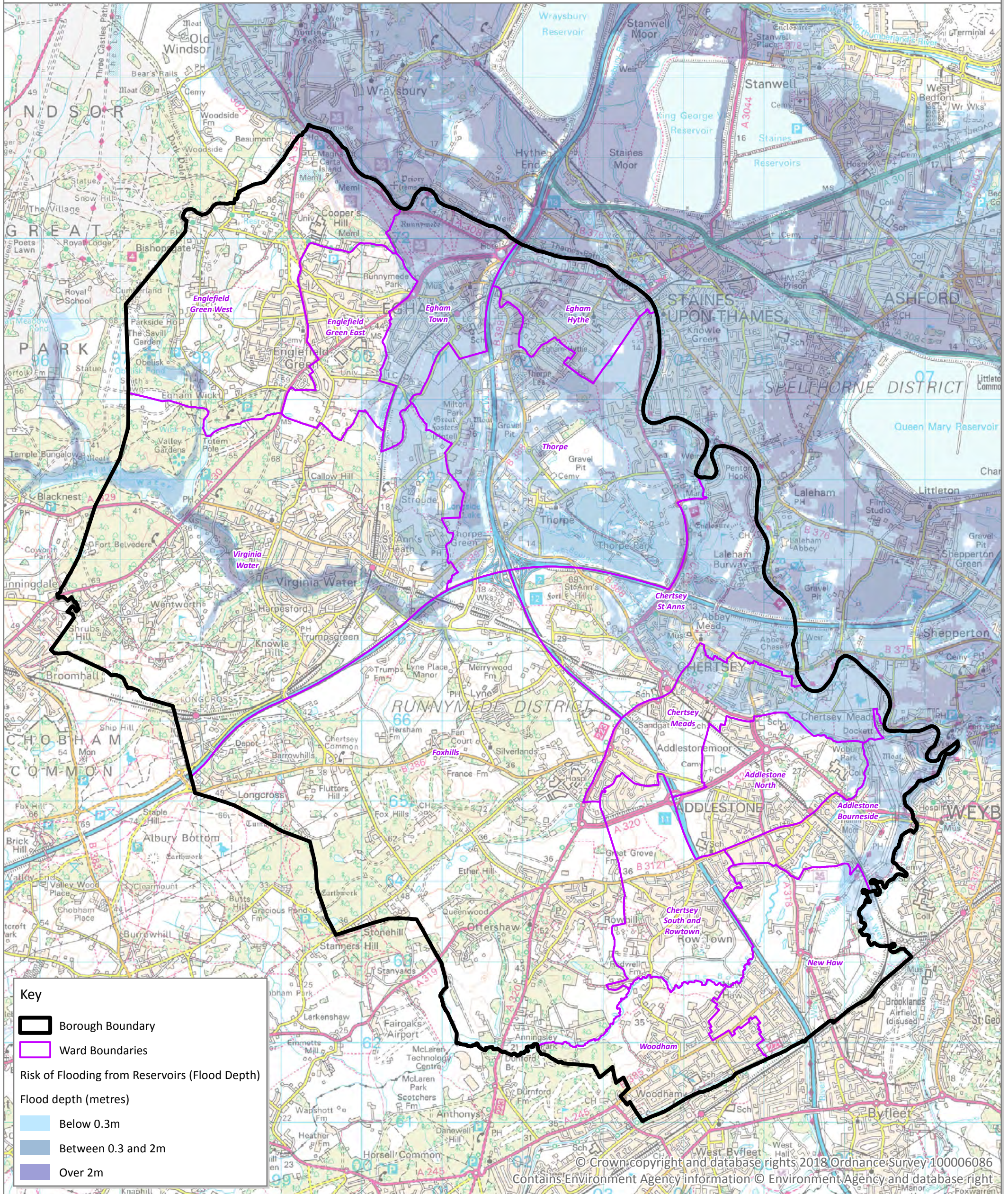
RUNNYMEDE BOROUGH COUNCIL: STRATEGIC FLOOD RISK ASSESSMENT



Figure 20b

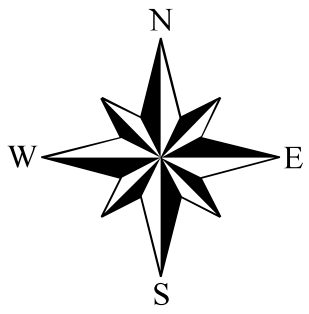
Runnymede Borough Council
Runnymede Civic Centre
Station Road
Addlestone
Surrey KT15 2AH

Risk of Flooding from Reservoirs (Flood Depth)



0 0.5 1 2 km





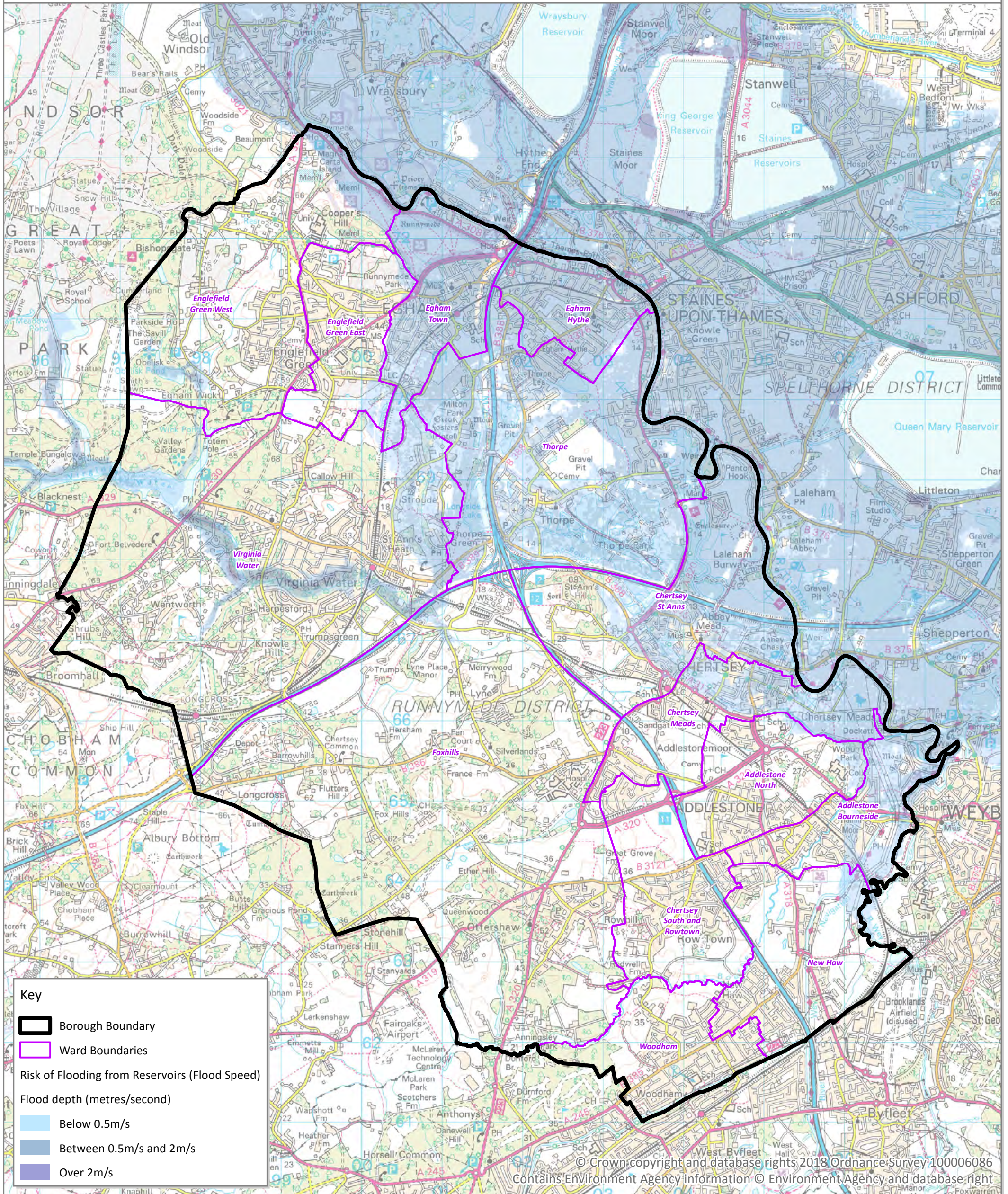
RUNNYMEDE BOROUGH COUNCIL: STRATEGIC FLOOD RISK ASSESSMENT



Figure 20c

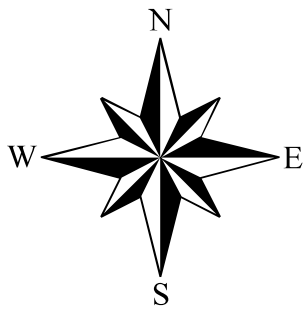
Runnymede Borough Council
Runnymede Civic Centre
Station Road
Addlestone
Surrey KT15 2AH

Risk of Flooding from Reservoirs (Flood Speed)



0 0.5 1 2 km





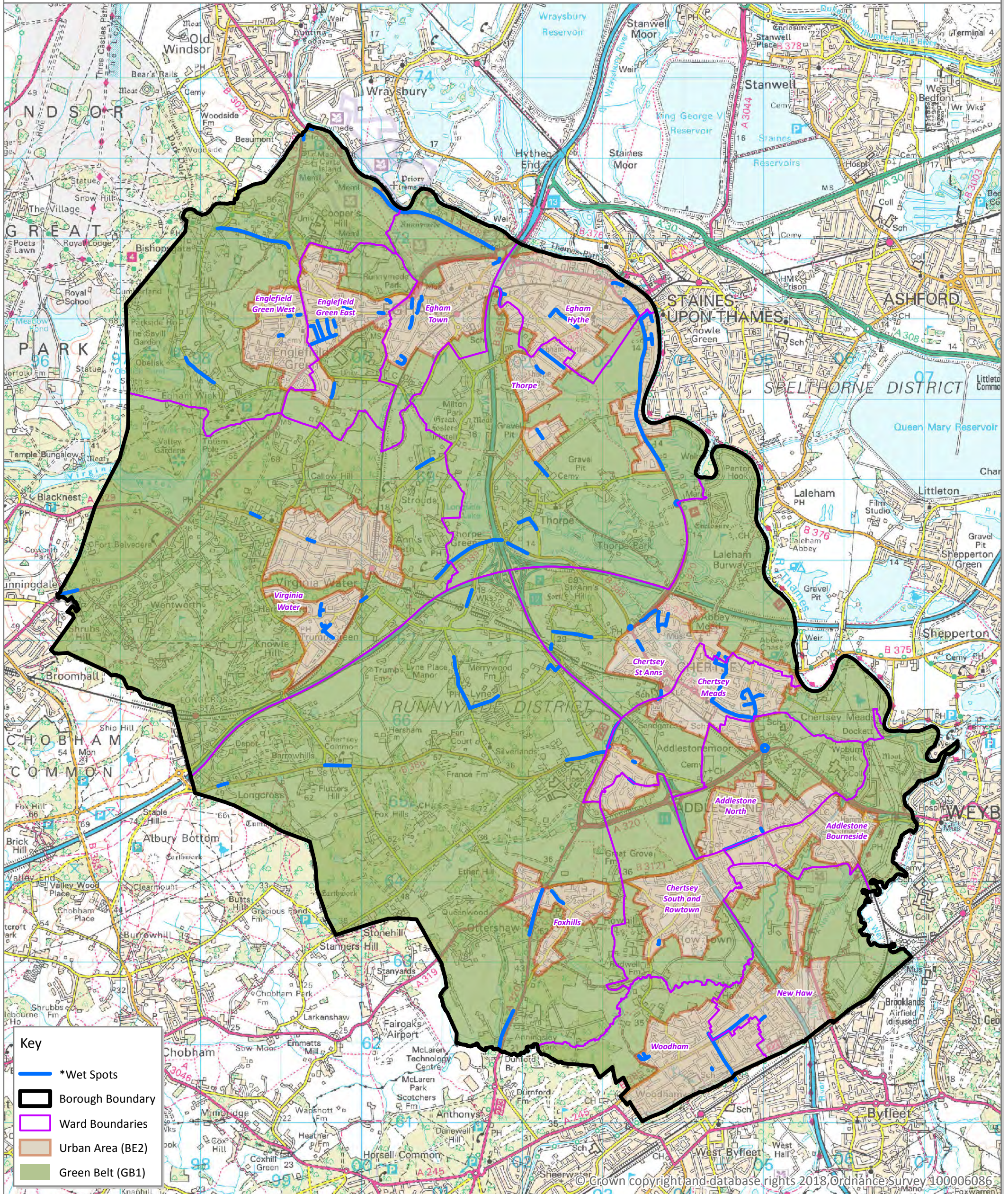
RUNNYMEDE BOROUGH COUNCIL: STRATEGIC FLOOD RISK ASSESSMENT



Figure 21

Wet Spots

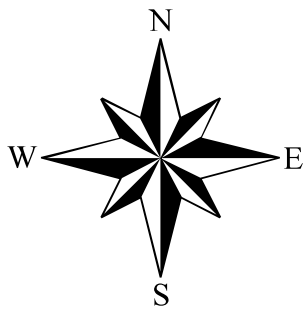
Runnymede Borough Council
Runnymede Civic Centre
Station Road
Addlestone
Surrey KT15 2AH



0 0.5 1 2 km

*Wet Spot data provided by Surrey County Council (December 2015 Update)





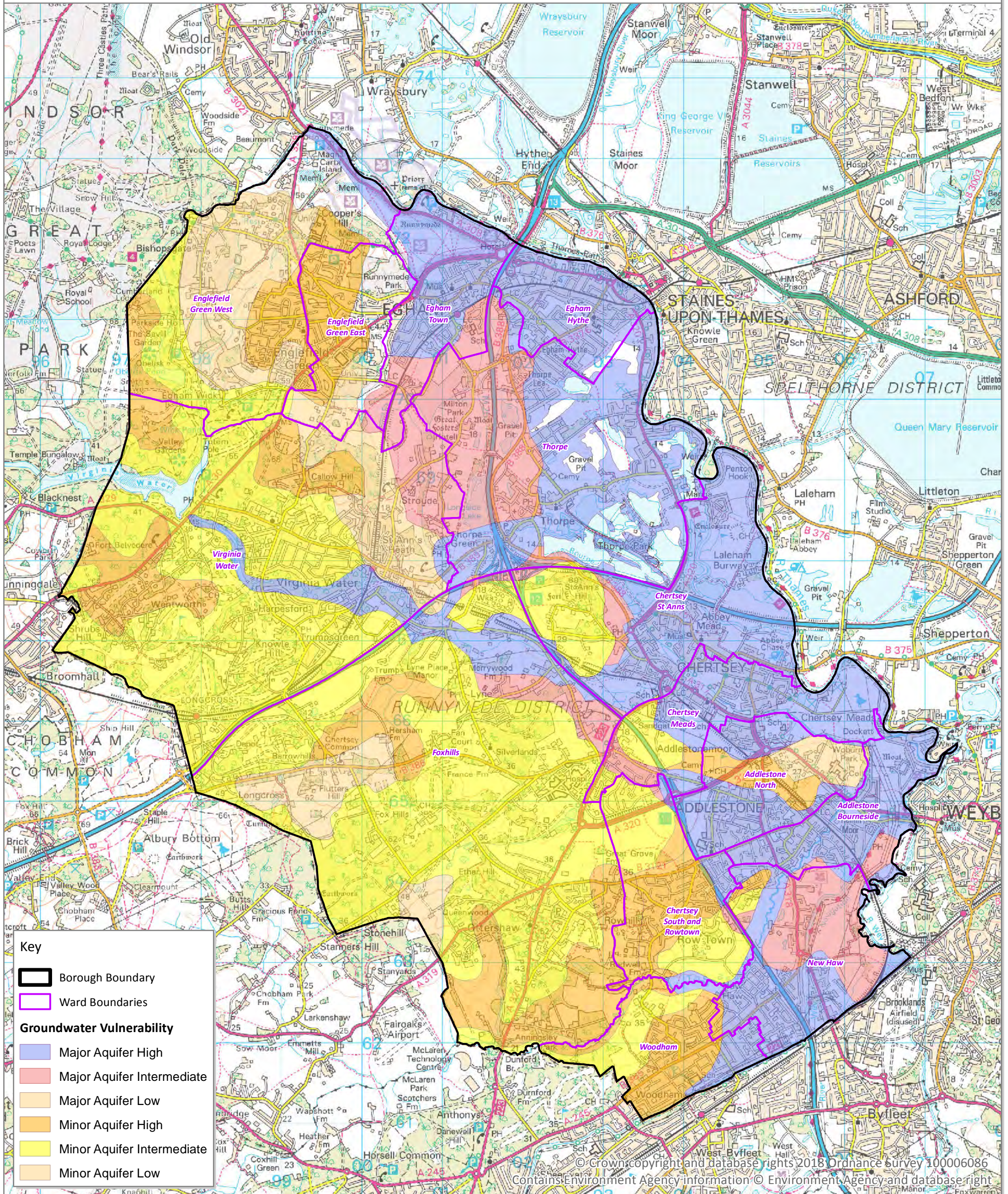
**RUNNYMEDE BOROUGH COUNCIL:
STRATEGIC FLOOD RISK ASSESSMENT**



Figure 22

Groundwater Vulnerability

Runnymede Borough Council
Runnymede Civic Centre
Station Road
Addlestone
Surrey KT15 2AH

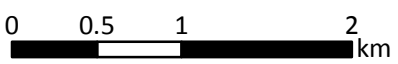


Key

- Borough Boundary
- Ward Boundaries

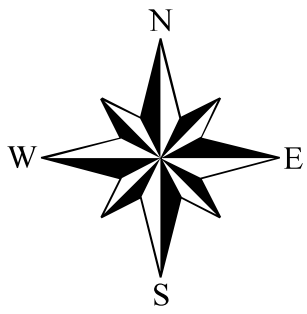
Groundwater Vulnerability

- Major Aquifer High
- Major Aquifer Intermediate
- Major Aquifer Low
- Minor Aquifer High
- Minor Aquifer Intermediate
- Minor Aquifer Low



© Crown copyright and database rights 2018 Ordnance Survey 100006086
Contains Environment Agency information © Environment Agency and database right





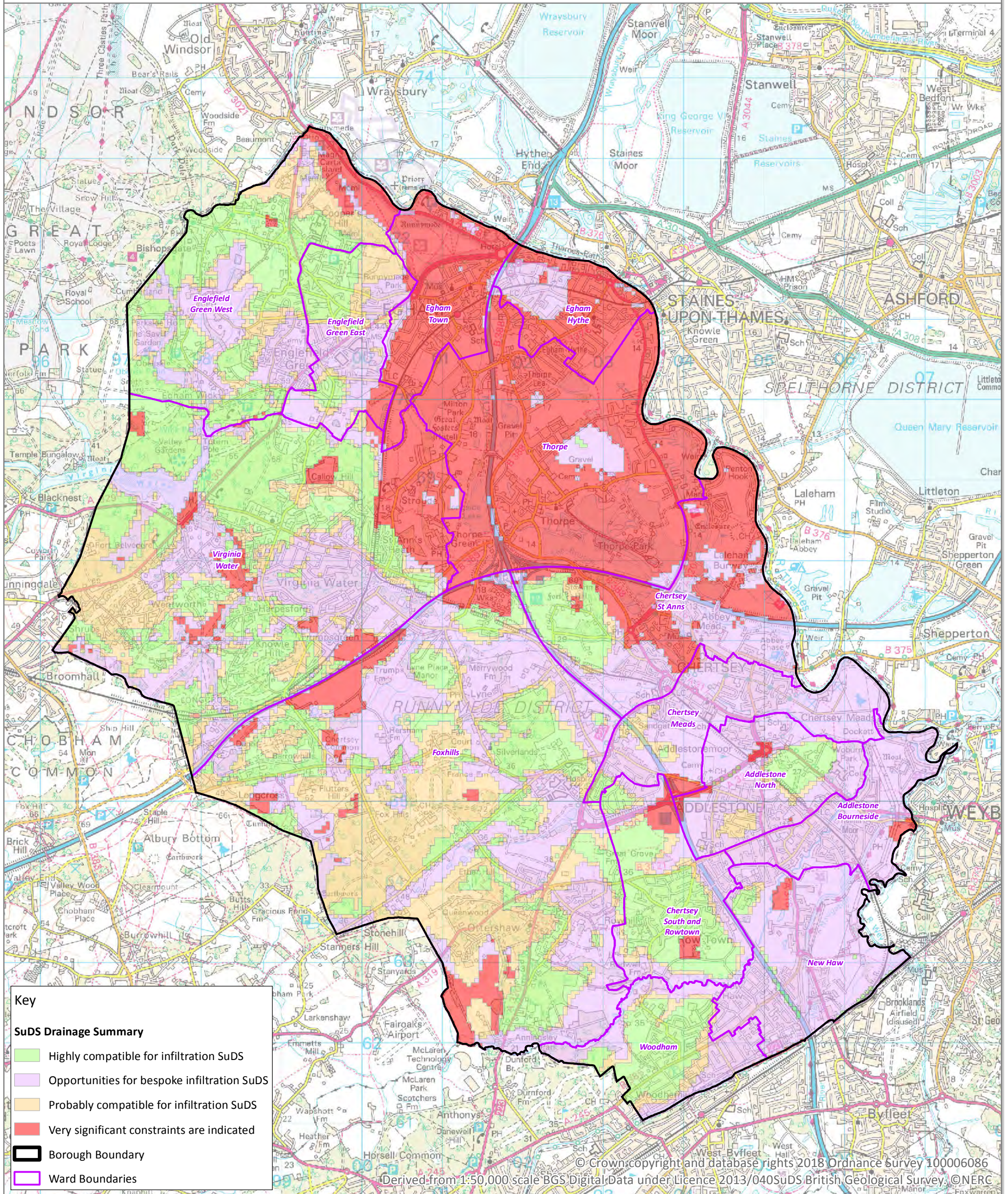
RUNNYMEDE BOROUGH COUNCIL: STRATEGIC FLOOD RISK ASSESSMENT



Figure 23

SuDS Drainage Summary

Runnymede Borough Council
Runnymede Civic Centre
Station Road
Addlestone
Surrey KT15 2AH



Key

SuDS Drainage Summary

- Highly compatible for infiltration SuDS
- Opportunities for bespoke infiltration SuDS
- Probably compatible for infiltration SuDS
- Very significant constraints are indicated
- Borough Boundary
- Ward Boundaries

0 0.5 1 2 km



Figure 24

Figure 24 can be found on page 121 of the Strategic Flood Risk Assessment

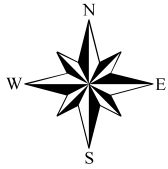
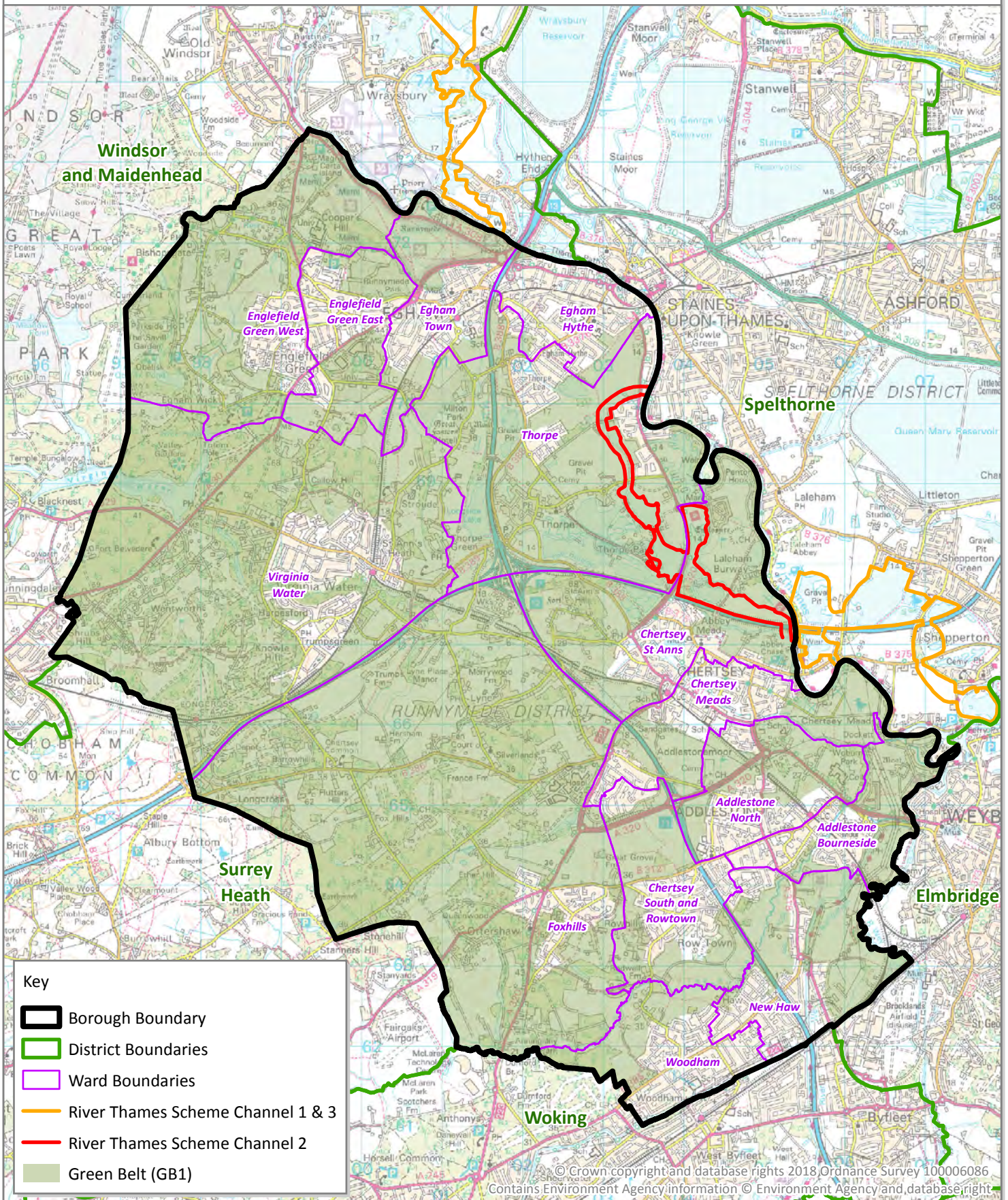








Figure 25

Flood Alleviation Channel

Runnymede Borough Council
Runnymede Civic Centre
Station Road
Addlestone
Surrey KT15 2AH



Key

-  Borough Boundary
-  District Boundaries
-  Ward Boundaries
-  River Thames Scheme Channel 1 & 3
-  River Thames Scheme Channel 2
-  Green Belt (GB1)

© Crown copyright and database rights 2018, Ordnance Survey 100006086
Contains Environment Agency information © Environment Agency and database right

0 0.5 1 2 km

