

Borough of Runnymede Profile

July 2019



Runnymede Borough Council
Runnymede Civic Centre
Station Road
Addlestone
Surrey
KT15 2AH
www.runnymede.gov.uk

Runnymede
BOROUGH COUNCIL

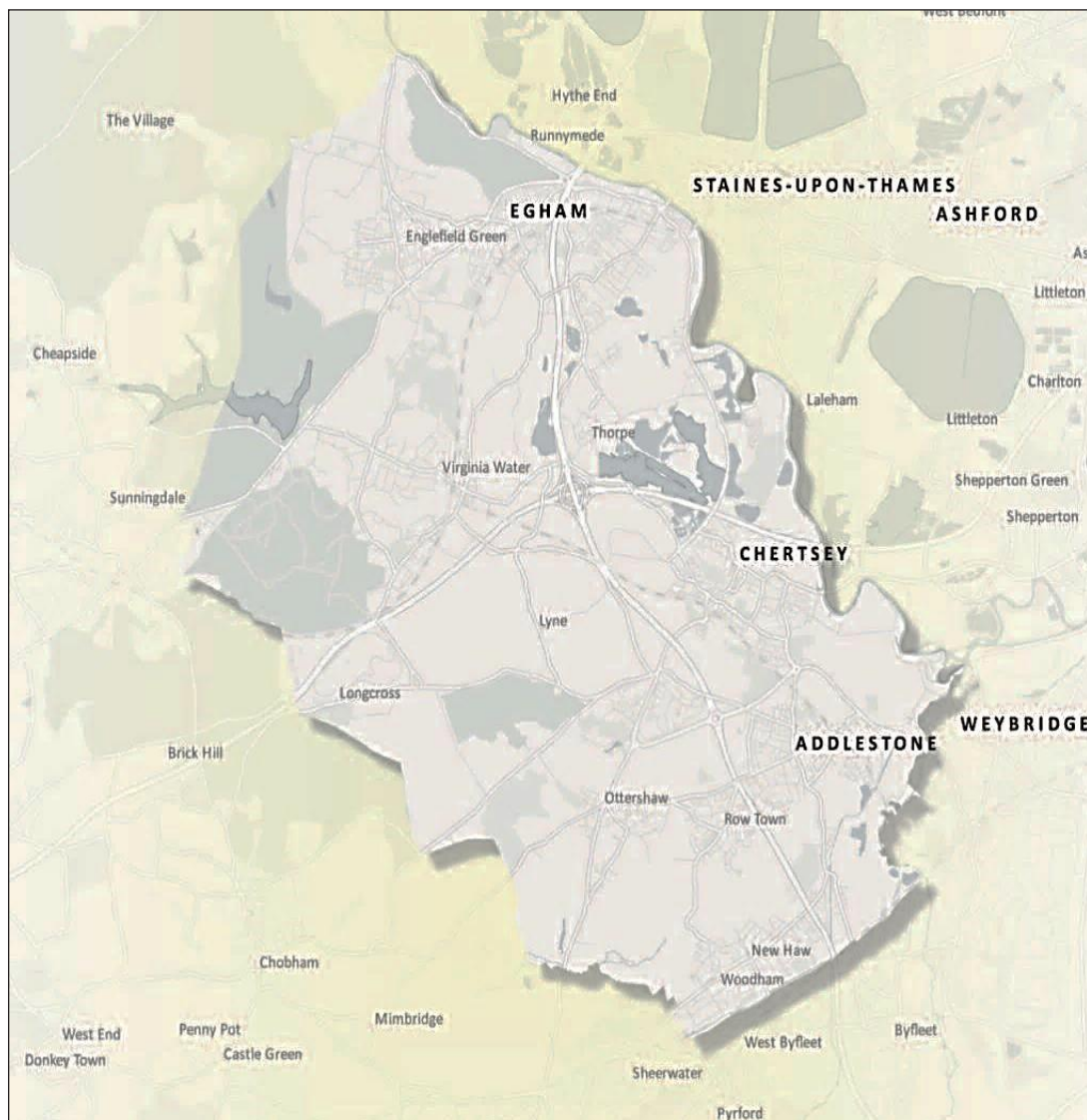


Introduction

Runnymede Borough is located in North West Surrey with a population of 86,900 (Source: ONS population estimates 2017) and covers 7,804 hectares (30.13 square miles), of which 77.9% (6,078 hectares) is Green Belt (Source: Census 2011). It has a population density of 11.13 persons per hectare (Source: Surrey-i) and includes the settlements of:

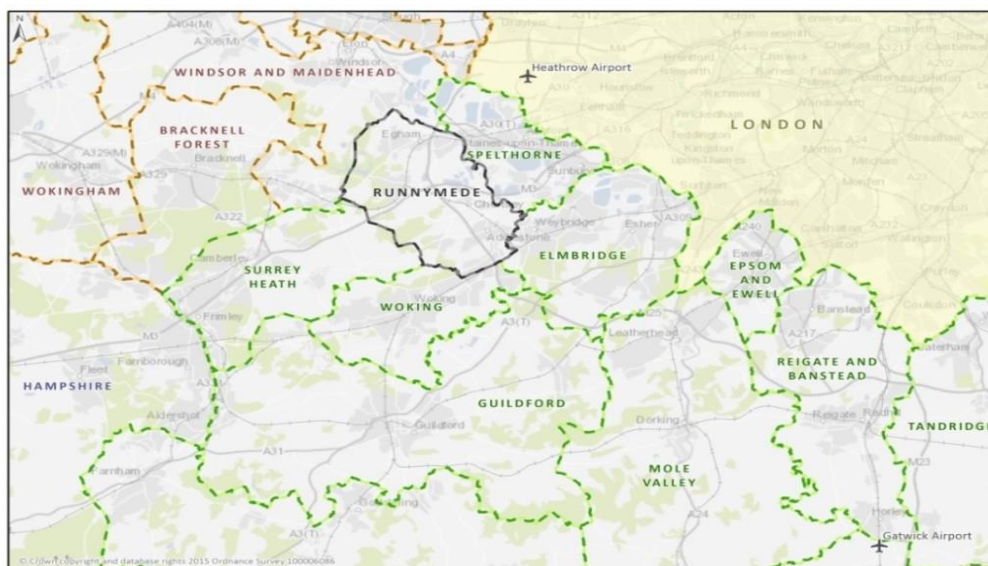
- Addlestone
- Chertsey
- Egham
- Englefield Green
- Longcross
- Lyne
- New Haw
- Ottershaw
- Row Town
- Thorpe
- Virginia Water
- Woodham

Map of the Borough



Runnymede borders with five neighbouring local authorities and is in close proximity to London and Heathrow Airport. The M25 motorway runs through the borough from north to south and the M3 motorway from west to east. It boasts several high profile attractions such as Thorpe Park, Savill Garden, Wentworth Golf Club, the Magna Carta Memorial, the Air Forces Memorial, Virginia Water Lake, Runnymede Meadows, Runnymede Pleasure Ground and the River Thames for leisure and commercial use.

Location of Runnymede



Population

(Source: ONS population estimates 2017)

	Runnymede	South East region	Great Britain
Total Population	86,900	9,080,800	64,169,400
Males	42,300	4,474,400	31,661,600
Females	44,600	4,606,400	32,507,80

The majority of people living in Runnymede were born in the UK (83.1%). However Runnymede is a diverse community with other countries of birth including India (1.2%), United States (1.1%), South Africa (1.0%), Ireland (1.0%), China (0.8%), Philippines (0.7%), and South America (0.4%).

The language spoken by most people living in Runnymede is English (91.1%). Other languages spoken include Chinese-Mandarin, Cantonese, other (1.0%), Polish (0.7%), Spanish (0.5%), Tagalog/Filipino (0.4%), Italian (0.4%), French (0.4%), Russian (0.3%), Portuguese (0.3%), German (0.3%).

The main religious make up of Runnymede is Christian (63.4%), Muslim (1.9%), Hindu (1.5%), Sikh (0.7%), Buddhist (0.6%), and Jewish (0.3%). Other religions (0.4%) include Pagan, Spiritualist, Rastafarian, and Taoist. The remaining 31.2% is split between 24% having No religion and 7.2% not stating a religion.

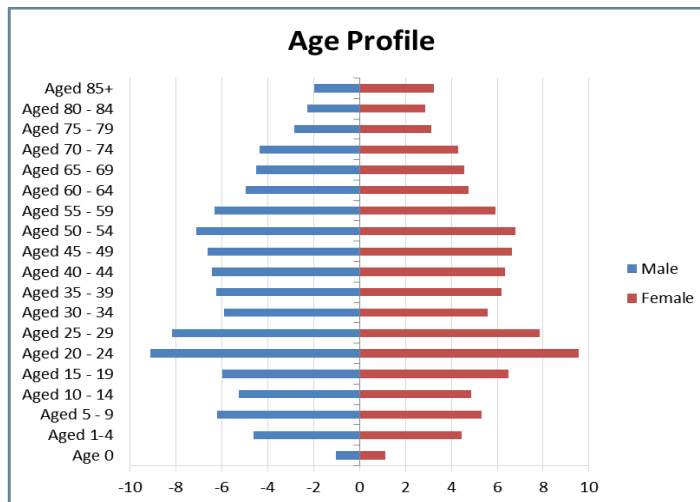
58.9% of people aged 16 and over are living as couples with 47.6% married, 10.6% live with a partner of the opposite sex, and 0.7% live with a partner of the same sex. 25.6% are single, 9.3% are living apart, have separated or divorced, and 6.2% of people living in Runnymede are widowed.

(Source: Census 2011)

Age Profile

(Source: ONS population estimates 2017)

	Runnymede	South East region	Great Britain
0-17 years	19.1%	21.4%	21.1%
18-44 years	39.2%	33.2%	34.9%
45-64 years	24.6%	26.3%	25.8%
64+ years	17.1%	19.1%	18.2%



The average age of people in Runnymede is 39.4 years, the median age is slightly lower at 38.4 years, and the most common age is 20 years.

Highest level of education

All usual residents aged 16-64
(Source: ONS Annual Population Survey 2018)

	Runnymede	South East region	Great Britain
NVQ4 and above	52.7%	42.2%	39.3%
NVQ3 and above	65.2%	61.8%	57.8%
NVQ2 and above	79.5%	78.9%	74.9%
NVQ1 and above	89.6%	89.2%	85.4%
Other qualifications (NVQ equivalent)	9.7%	5.2%	6.8%
No formal qualifications	<1%	5.6%	7.8%

Other qualifications - foreign qualifications and some professional qualifications, NVQ1 - fewer than 5 GCSEs at grades A-C or equivalent, NVQ2 - 5 or more GCSEs at grades A-C or equivalent, NVQ3 - 2 or more A levels or equivalent, NVQ4 - HND, Degree, Higher Degree or equivalent.

Health and wellbeing

	Runnymede	South East region	Great Britain
Very Good Health <small>(Source: Census 2011)</small>	51.3%	49.0%	47.6%
Good Health <small>(Source: Census 2011)</small>	34.1%	34.6%	33.7%
Male life expectancy <small>(Source: ONS 2015-2017)</small>	80.6 years	80.6 years	78.3 years
Female life expectancy <small>(Source: ONS 2015-2016)</small>	84.3 years	84.0 years	82.1 years
% of people with a limiting long-term illness <small>(Source: Census 2011)</small>	13.9%	15.7%	18.1%
% of people with Long Term illness or disability with day to day activities limited a lot <small>(Source: Census 2011)</small>	5.9%	6.9%	8.6%
% of adults physically active (more than 30 minutes physical activity per week) <small>(Source: Public Health England 2017-2018)</small>	71.5%	69.8%	66.3% <small>(England only)</small>

Runnymede scores above the regional and national average for most health measures, however 7.9% of children in Reception (age 4/5) and 17.2% of children in Year 6 (age 10/11) are obese, and 10.6% of all children are living in poverty.

(Source: Surrey-i)

Housing

	Runnymede	South East region	Great Britain
All Households <small>(Source: ONS 2016)</small>	35,350	3,735,000	26,865,000
All households who owned their home outright <small>(Source: Census 2011)</small>	33.1%	32.5%	30.6%
All households who owned their home with a mortgage or loan <small>(Source: Census 2011)</small>	36.4%	35.1%	32.8%
% of social housing <small>(Source: Census 2011)</small>	12.9%	13.7%	18.2%
Average weekly social housing rent per dwelling <small>(Source: ONS 2017-2018)</small>	£109	£99	£90 <small>(England only)</small>

The demand for housing in the borough is high with a mean price of £510,001. This is nearly 60% higher than the national average price of £300,560.

(Source: ONS House Price Statistics for Small Areas Dec 1995 to Mar 2018)

Economic statistics

In 2018 the working age population (16-64 years) was estimated at 57,000 persons (65.6% of the population), higher than South East (61.8%) and Great Britain (62.9%).

(Source: ONS annual population survey Apr 2018-Mar 2019))

	Runnymede	South East region	Great Britain
Economically Active - In Employment	76.8%	78.4%	75.4%
Full time median weekly pay for people working in an area.	£682.90	£589.20	£574.90 (England only)
Economically Active - Unemployed	2.4%	3.4%	4.1%
Economically Inactive – Student, Sick, etc.	21.6%	18.9%	21.3%
% of population aged 16-64 claiming working age benefits (Source: DWP benefit claimants)	5.7%	8.3%	11.0%

Runnymede ranks the 46th least deprived out of 326 local authorities. Although it has a high domain rank for employment, it has a low domain rank for barriers to housing and services. The domain rank for education is also average when compared with the sub-regional rankings. (Source: Ministry of Housing, Communities and Local Government 2015)

Number and size of enterprises

(Source: ONS Inter Departmental Business Register 2017)

	Runnymede	South East region	Great Britain
Enterprises - Total	4,270	403,680	2,485,415
Micro: 0-9 persons	3,805 (89.1%)	363,345 (90.0%)	2,215,865 (89.1%)
Small: 10-49 persons	335 (7.9%)	32,890 (8.1%)	221,225 (8.9%)
Medium: 50-249 persons	95 (2.2%)	5,985 (1.5%)	38,835 (1.6%)
Large: 250+ persons	35 (0.8%)	1,460 (0.4%)	9,490 (0.4%)

The top occupations listed by people in Runnymede are Professional 26.3%, Associate Professional and Technical 13.7%, Managers, Directors and Senior Officials 13.0%, Administrative and secretarial 11.5%, Sales and Customer Services 9.5%, Caring, Leisure and Other Service 9.2%, Skilled Trades, Process Plant and Machine Operatives, Elementary Occupations 16.8%. (Source: ONS annual population survey 2017)

Runnymede records high earnings with the median gross weekly pay recorded as approximately £599 per week for full-time workers, compared to £596 in the South East and £552 in Great Britain. Male full-time earnings are significantly higher (14%) than female full-time. This is considerably higher than the UK average of 9.1%. (Source: ONS Annual Survey of Hours and Earnings 2017)

Runnymede has a strong local economy and maintains a very competitive environment for businesses. GVA per head has grown at a rapid rate and at £45,000 per head is in the top 10 in the UK and second in the South-East.

(Source: ONS Regional Gross Value Added (Income Approach) by Local Authority in the UK 2015)

Key sectors of employment

(Source: ONS Business Register and Employment Survey 2017)

	Runnymede	South East region	Great Britain
Manufacturing	1.7%	6.2%	8.2%
Electricity, Gas, Steam, Air Con.	7.5%	0.5%	0.5%
Water Supply & Waste Management	0.1%	0.8%	0.7%
Construction	5.0%	5.5%	4.8%
Wholesale & Retail Trade	13.3%	16.3%	15.2%
Transportation & Storage	2.5%	4.6%	4.7%
Accommodation & Food Service	5.8%	7.3%	7.5%
Information & Communication	8.3%	5.9%	4.4%
Financial & Insurance	2.9%	2.8%	3.5%
Real Estate	1.3%	1.6%	1.7%
Professional, Scientific & Technical	11.7%	8.0%	8.4%
Administrative & Support Service	6.7%	8.7%	9.1%
Public Administration & Defence	1.3%	3.2%	4.3%
Education	11.7%	10.4%	8.9%
Human Health & Social Work	11.7%	12.7%	13.3%
Arts, Entertainment & Recreation	4.2%	2.7%	2.6%
Other Service Activities	3.3%	2.5%	2.0%

Safer and stronger communities

	Runnymede (Source: Surrey Police 2017)	South East region (Source: ONS Apr 2017 to Mar 2018)	England & Wales (Source: ONS Apr 2017 to Mar 2018)
Number of recorded notifiable offences (crime) per 1000 of population	78.0	74.4	83.5
Number of recorded incidents of anti-social behaviour per 1000 of population	25.4	20.8	28.4
Incidents of domestic abuse per 1000 of population	7.4	8.1	8.3



Runnymede Borough Council
Runnymede Civic Centre
Station Road
Addlestone
Surrey
KT15 2AH
www.runnymede.gov.uk